

CALL FOR
PRESENTERS/PROPOSALS



CLAYTON STATE UNIVERSITY

CONTINUING AND PROFESSIONAL
EDUCATION (CaPE)

P
R
E
S
E
N
T
S

EMOTIONAL
INTELLIGENCE
SUMMIT





ABOUT THE SUMMIT

We invite you to attend the Emotional Intelligence and Social Mobility Summit at Clayton State University in Morrow, Georgia from July 9 to 11, 2025. This dynamic three-day event will explore the critical intersections of Emotional Intelligence (EI) and Social Mobility, and examine the emerging role of Artificial Intelligence (AI) in these areas.

In today's rapidly evolving landscape, characterized by social media and the aftermath of the COVID-19 pandemic, the importance of emotional intelligence has never been more pronounced. As we navigate a world increasingly mediated by technology, fostering meaningful human connections is essential to combat social isolation and enhance community engagement.

This summit will cater to a diverse audience, including business leaders, educators, healthcare professionals, clergy, community advocates, law enforcement, public health, and mental health specialists. Participants will gain valuable insights into how EI can serve as a catalyst for talent development, workforce enhancement, and broader economic growth, all of which are vital for improving social mobility within our communities.





Attendees can expect to engage with thought leaders on a variety of impactful themes, including:

- **Empowering Leadership:** Explore how emotional intelligence can drive positive change in organizations and enhance talent development.
- **Building Resilient Communities:** Discover strategies to foster social cohesion and support systems that promote social mobility.
- **Workforce Development:** Examine the integration of EI in training programs to boost employee engagement and career advancement.
- **Navigating Digital Interactions:** Discuss the impact of technology on emotional well-being and the importance of EI in maintaining meaningful connections.
- **Ethical Decision-Making:** Investigate the role of EI in navigating ethical dilemmas, particularly in AI.
- **Clergy and EI:** Explore how emotional intelligence can enhance pastoral care and strengthen congregational relationships.

- **Mental Health Integration:** Learn to incorporate emotional intelligence into therapy to improve client engagement and resilience.
- **Supporting Educators and Students:** Engage with strategies for integrating emotional intelligence into educational curricula, enhancing teaching practices, and promoting student well-being.

This summit promises to equip participants with practical tools and strategies but also encourages collaboration and dialogue aimed at fostering social mobility through enhanced emotional skills.

Join us for this transformative experience and be part of a movement that seeks to elevate individual potential and strengthen community bonds through emotional intelligence. We will pave the way for a more connected and equitable future.

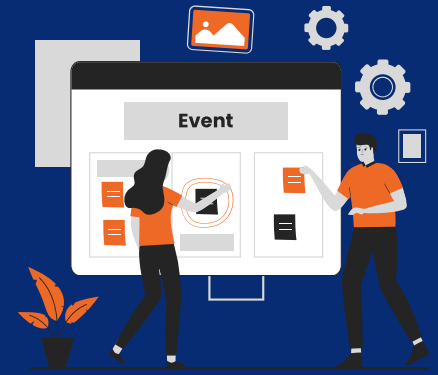
SUMMIT THEME:

“Leveraging Emotional Intelligence for Social Mobility and Economic Growth in a Tech-Driven World.”





EVENT DETAILS



Event Dates:

- Preconference Summit – Wednesday, July 9, 2025
- Full Conference – Thursday, July 10, 2025 – Friday, July 11, 2025

Location:

Clayton State University
Continuing and Professional Education
Harry Downs Center
Morrow, Georgia
678.466.5118

Priority Submission Deadline: April 30, 2025

Submission Guidelines for Presenters

All proposals must be submitted via PDF format and include the following information:

Presentation Title: Provide a clear and concise title that reflects the content and focus of your presentation.

Presentation Length: Select one of the following options:

- Pre-Conference Session: 7 hours (Wednesday, July 9, 2025)
- Pre-Conference Session: 3-hour Presentation (Wednesday, July 9, 2025)
- Full Conference Session: 1 to 1.5-hour Presentation (Thursday, July 10, 2025, or Friday, July 11, 2025)

Category: Select one of the following topic areas for your proposal. You may use one of the exact titles below or develop a related topic:

- Harnessing Emotional Intelligence for Societal Change
- Innovative Leadership in the Age of EI
- The Future Workforce: Emotional Intelligence as a Key Competency
- Emotional Intelligence and Digital Well-Being
- Breaking Down Barriers to Social Mobility Through EI
- The Synergy of Human and Artificial Intelligence
- Cultivating Emotional Intelligence in Youth
- Community Resilience and Collective Well-Being
- Transformative Power of Emotional Intelligence in Crisis Management
- Empathy and Innovation: Driving Economic Growth
- Emotional Intelligence in Law and Justice
- Health and Healing Through Emotional Intelligence
- Empowering Women through Emotional Intelligence
- Faith, Emotional Intelligence, and Social Justice
- Emotional Intelligence in Faith Based Leadership
- Bridging General Gaps in the Church through EI
- Leveraging AI and EI for Church Growth and Outreach



EVENT DETAILS CONTINUED

- Navigating Trauma and Healing in the Black Church
- Present Current or Previous Research related to EI, AI, or Social Mobility
- Professional Development for Educators: Enhancing teaching practices through emotional intelligence training
- Collaborative Learning and EI: Building teamwork and communication skills in educational settings through emotional intelligence
- Emotional Resilience in Students: Techniques to foster resilience and emotional well-being among students
- Other (Please specify)

Abstract (200-500 words): Provide a detailed description of your proposed presentation. This should include key learning objectives, an overview of the topic, and the anticipated benefits for the audience. Be sure to highlight any evidence-based practices or relevant research that supports your presentation.

Learning Objectives: List 3-5 specific learning objectives for participants. These should clearly articulate the knowledge, skills, or competencies that attendees will gain from the presentation.

Presenter Information: Please include the following details for each presenter:

- **Full Name**
- **Credentials:** (e.g., B.S., MBA, LCSW, RN, Ph.D. MD, etc.)
- **Title/Position**
- **Organization/Institution**
- **Contact Information:** (Email and Phone)
- **Brief Bio:** (150-200 words)
- **Headshot (Only if Interested in Keynote Speaker Opportunity)**

Co-Presenters (if applicable): If there are any co-presenters, please provide the same information for each co-presenter.





PRESENTATION FORMAT

Keynote Presentation:

The keynote presentation sets the tone and theme for the Emotional Intelligence and Social Mobility Summit. This 1.5-hour session is designed to be informational, inspiring, and engaging. Delivered by a renowned speaker, the keynote will equip participants with essential knowledge, tools, and motivation for personal and professional growth. This presentation aims to ignite a spark within the audience, fostering a deep commitment to enhancing emotional intelligence and driving social mobility. The speaker's insights will serve as a catalyst for the day's discussions and activities.

Demonstration/Skill Building Session:

These sessions provide attendees with hands-on, practical skills that can be immediately applied in various professional contexts, including clinical practice, education, and leadership. Featuring live demonstrations, role-playing, and step-by-step instructions, participants actively engage and practice the skills being taught, receiving feedback from the presenter. Each session is interactive and experiential, ensuring that participants leave with real examples and practical tools to enhance their effectiveness, maximize their potential, and achieve greater success in their work environments.

Workshop/Interactive Presentation:

Workshops and interactive presentations are designed to involve attendees in collaborative and engaging learning experiences. Presenters use a mix of lectures, group activities, and discussions to deeply explore topics related to emotional intelligence and social mobility. This format encourages dialogue, problem-solving, and peer learning, reinforcing concepts and ensuring the practical application of ideas. Participants will work together to develop strategies and solutions that can be implemented in their respective fields.

Panel Discussion:

A panel discussion brings together experts from diverse backgrounds to share their perspectives on specific topics related to emotional intelligence and social mobility. Moderated by a facilitator, each panelist offers unique insights, followed by a Q&A session with the audience. This format fosters a rich discussion of multiple viewpoints, trends, and challenges, providing a well-rounded exploration of the subject matter. Attendees will gain a deeper understanding of the complexities and opportunities within the fields of emotional intelligence and social mobility.



Workshop Level

Please indicate the level of your workshop:

- Introductory
- Intermediate
- Advanced

References/Resources (Optional)

Include a list of at least three references, resources, or citations that support the content of your presentation.

Audio/Visual Requirements

List any specific AV needs, such as projectors, microphones, or internet access. CaPE will do its best to accommodate requests, but equipment availability may vary. Each room will be equipped with:

- Microphone
- Projector and Screen
- Standard HDMI connection cable
- Laptop/Computer

Availability

Please indicate your availability during the conference dates to help us schedule your presentation at a convenient time:

- Wednesday AM / PM / All Day
- Thursday AM / PM / All Day
- Friday AM / PM / All Day





CONNECT WITH US

Submit Request for Proposal to:

https://claytonstate.qualtrics.com/jfe/form/SV_5aQHJWzNmX1PGvQ

Contact Information:



Dr. Reginald Turner, Ph.D.
Executive Director
Clayton State University



2000 Clayton State Blvd
Continuing & Professional Education
Harry S. Downs Center
Morrow, GA 30260



678-466-5115



ReginaldTurner@clayton.edu



www.claytonstatecape.com/summit